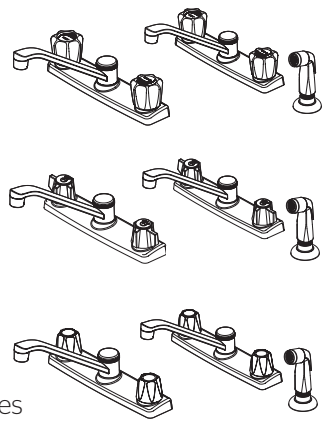


- | | |
|---|---|
| G135-1000 Finish(PC) <input type="checkbox"/> | G135-4000 Finish(PC) <input type="checkbox"/> |
| G135-1100 Finish(PC) <input type="checkbox"/> | G135-400S Finish(S) <input type="checkbox"/> |
| G135-2000 Finish(PC) <input type="checkbox"/> | G135-4100 Finish(PC) <input type="checkbox"/> |
| | G135-5000 Finish(PC) <input type="checkbox"/> |



Specifications

Features

- 1.8 GPM Flow Rate
- Acrylic Windsor® Handles (1100 & 4100 Only)
- Blade Handles (2000 & 5000 Only)
- Includes Metal Supply Nuts
- 3-Hole Installation (1000, 1100, & 2000 Only)
- 4-Hole Installation (400, 4100, & 5000 Only)
- White Side Spray (400, 4100, & 5000 Only)
- Washerless Valves
- Limited Lifetime Warranty

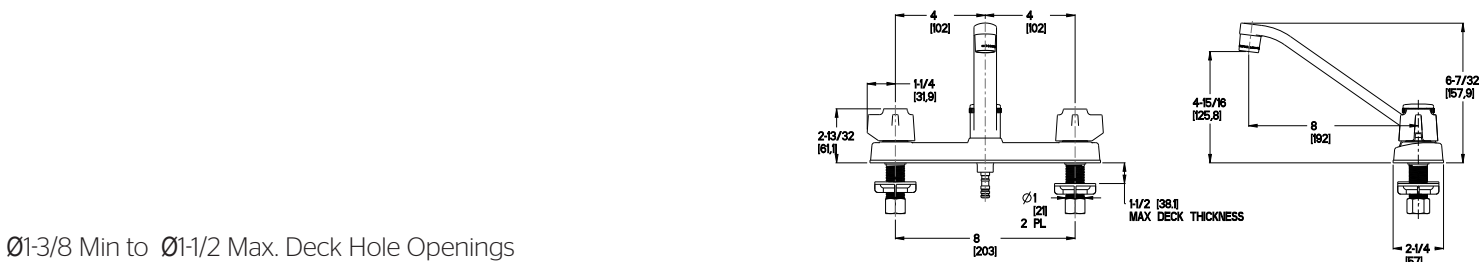
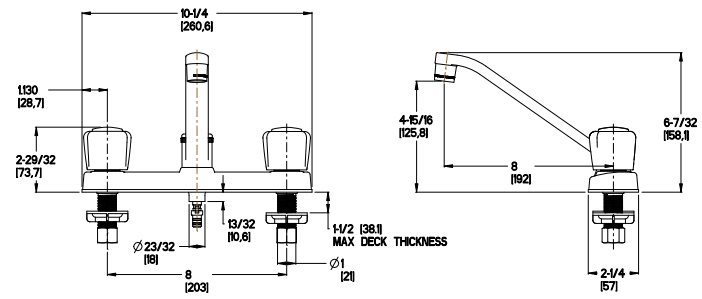
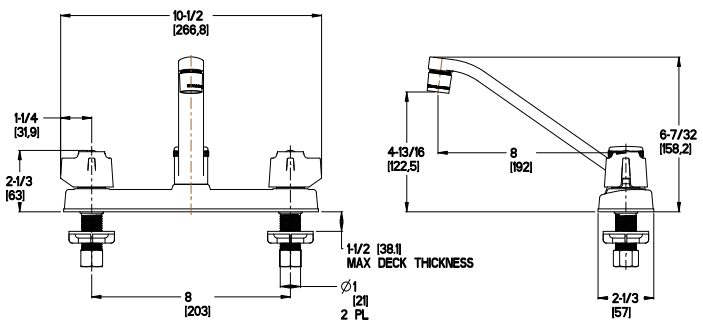
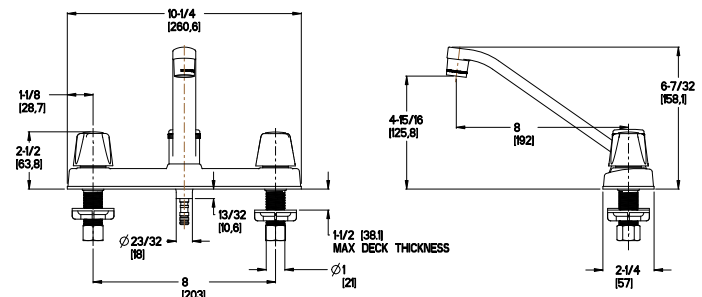
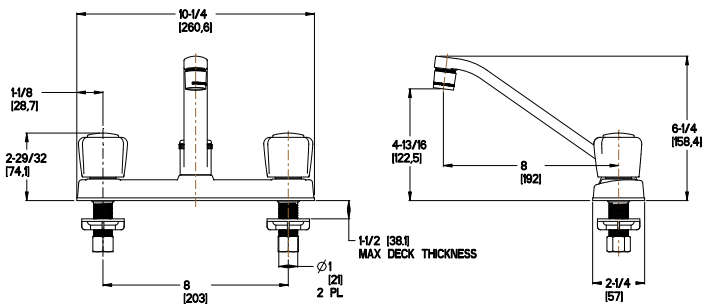
Code Compliance

Pfister products are designed and manufactured in compliance with the following standards and codes:

- IAPMO Certified to ASME A112.18.1/CSA B125.1 including:
 - ASME A112.18.3 (Backflow Prevention)
- NSF/ANSI/CAN61:Q≤1
- CEC Certified/CALGreen compliant
- ADA Compliant - ANSI A117.1 (Lever Handles Only) (applies only to 1100, 2000, and 5000)



Dimensions



Ø1-3/8 Min to Ø1-1/2 Max. Deck Hole Openings